

WTM Human Resources Management (HRM)

Software Installation Instructions

Who Should Read This Guide

This guide is meant for users using the inbuilt Web-Installer (a step-by-step installation/configuration wizard), which is the default and recommended method for installing WTM HRM.

Overview

This INSTALLATION GUIDE file describes how to install and setup WTM HRM Application. It is intended for experienced administrators and novices alike. After installation, you can configure users and do other administrative tasks. To install WTM HRM ensure that you have the appropriate prerequisites.

Pre-requisites

The pre-requisites are:

System Requirements

Hardware Support

-
-
- 1) Processor - Single-core 2GHz
 - 2) Architecture - 32X or 64X
 - 3) RAM - 1 GB

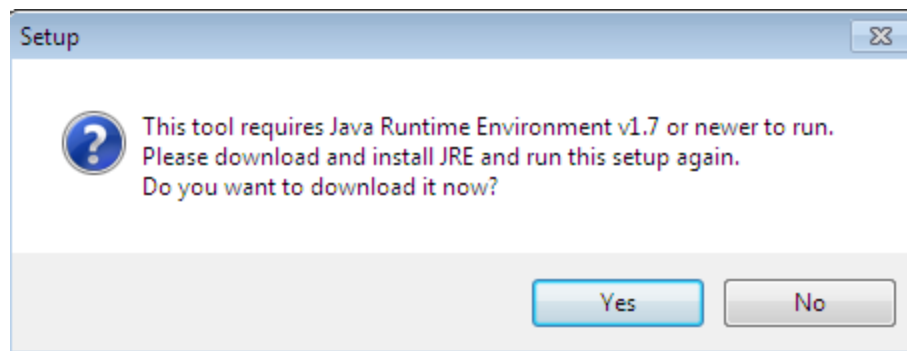
Software Support

- 1) Windows 8, Windows 7, Windows Vista, Windows XP
- 2) 32-bit or 64-bit operating system (dual compatibility)
- 3) Browser - Firefox 18.x

Important Note: If your system already has java run time environment (JRE) then please do not follow the further installation process.

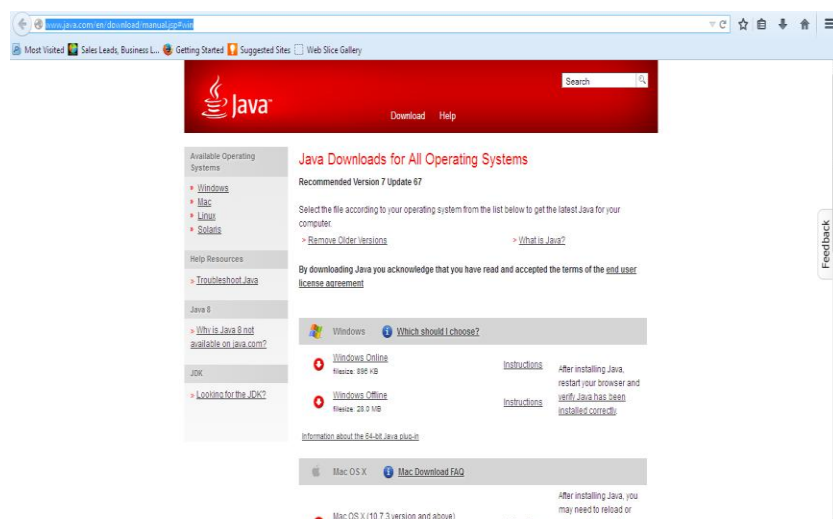
Installation Process

Click on Setup File, if you will get popup of java run time environment (JRE) then please download & install JRE & run this setup again.







Click on yes button then this window will get open.

<http://www.java.com/en/download/manual.jsp#win>



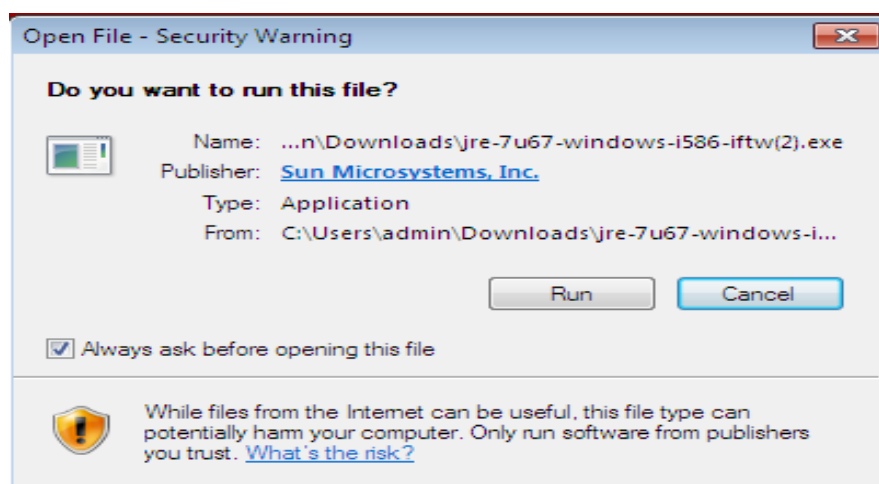
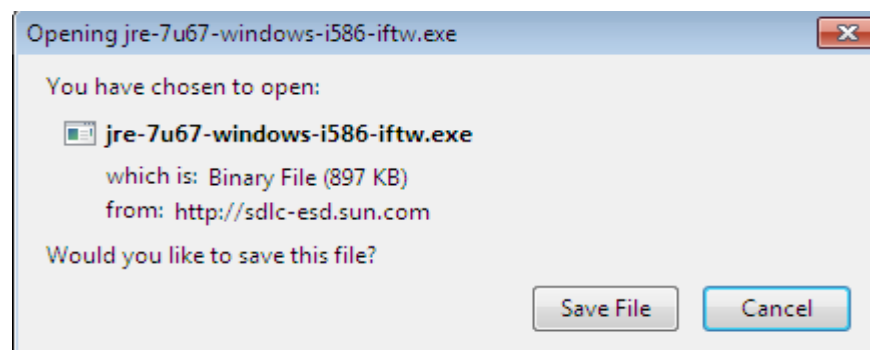
Then download java software for Windows Online

 Windows  [Which should I choose?](#)

 Windows Online filesize: 896 KB	Instructions	After installing Java, restart your browser and verify Java has been installed correctly.
 Windows Offline filesize: 28.0 MB	Instructions	

[Information about the 64-bit Java plug-in](#)

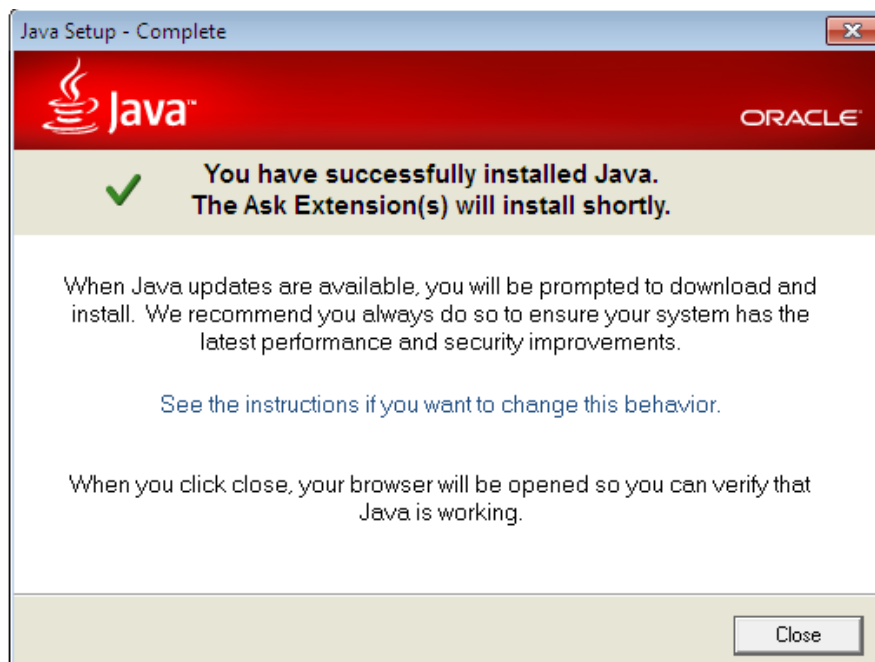
Then you will get popup of this window, after that save & run the file.



Install the set up & click on next options

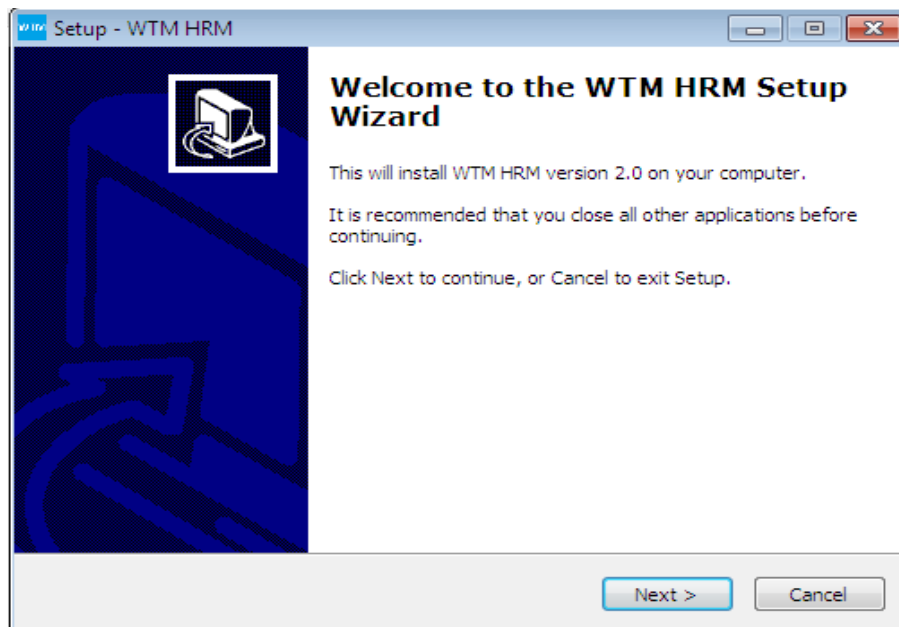


After that you will successfully installed java, agree & continue.

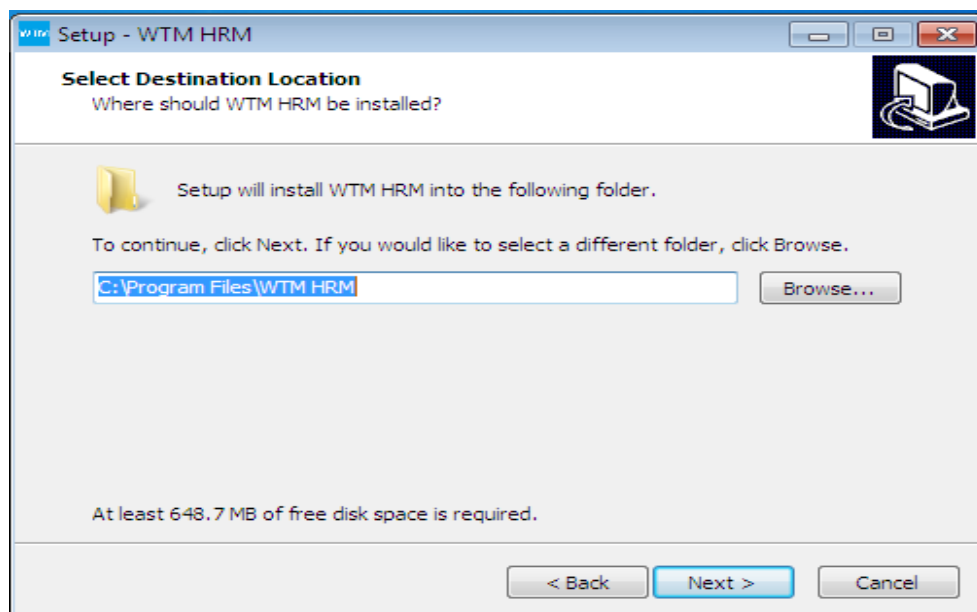


Step 1: - Go to WTM Setup File

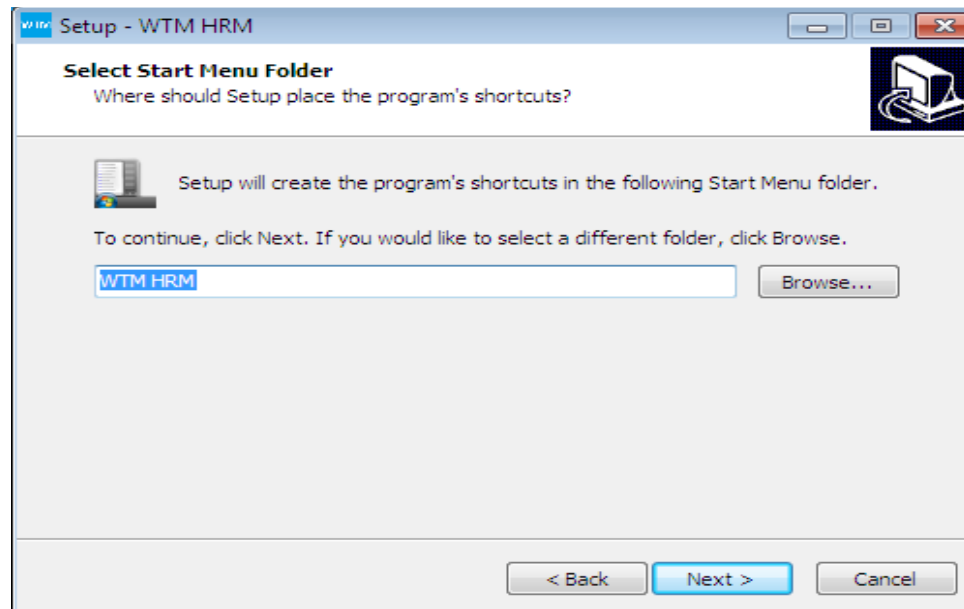
1. Get wtm-hrm-bl1.exe
2. Right click on wtm-hrm-bl1.exe and run as administrator
3. Click Next button on Welcome screen



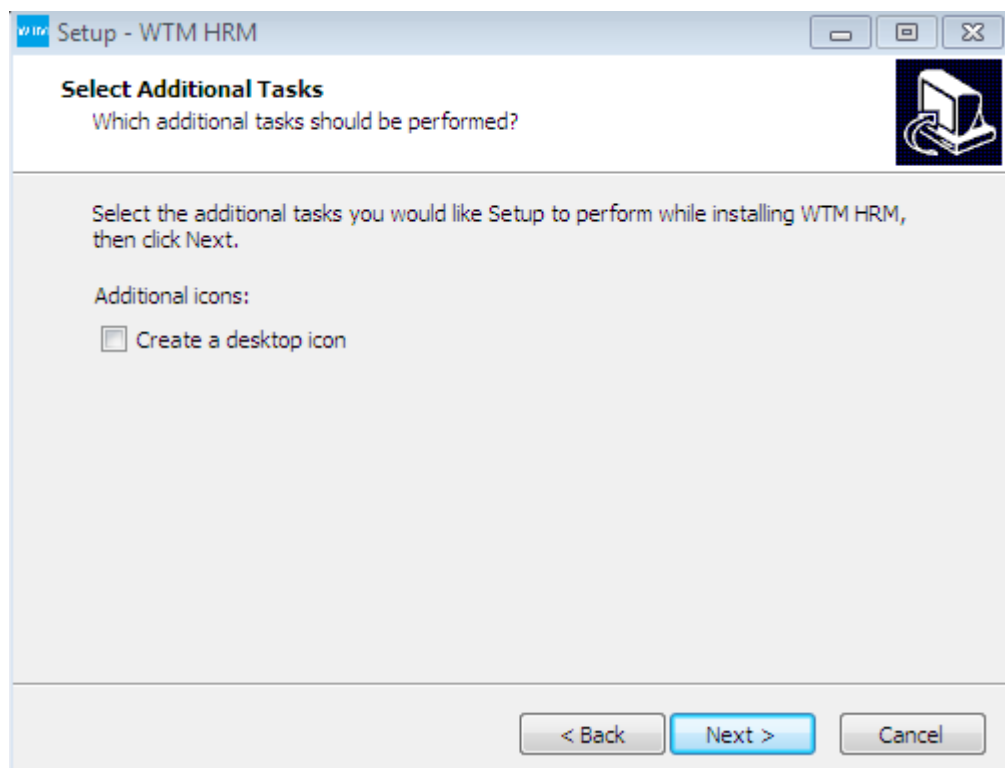
4. Browse WTM HRM SOFTWARE installation path i.e. C:\Program Files (x86)\WTM HRM



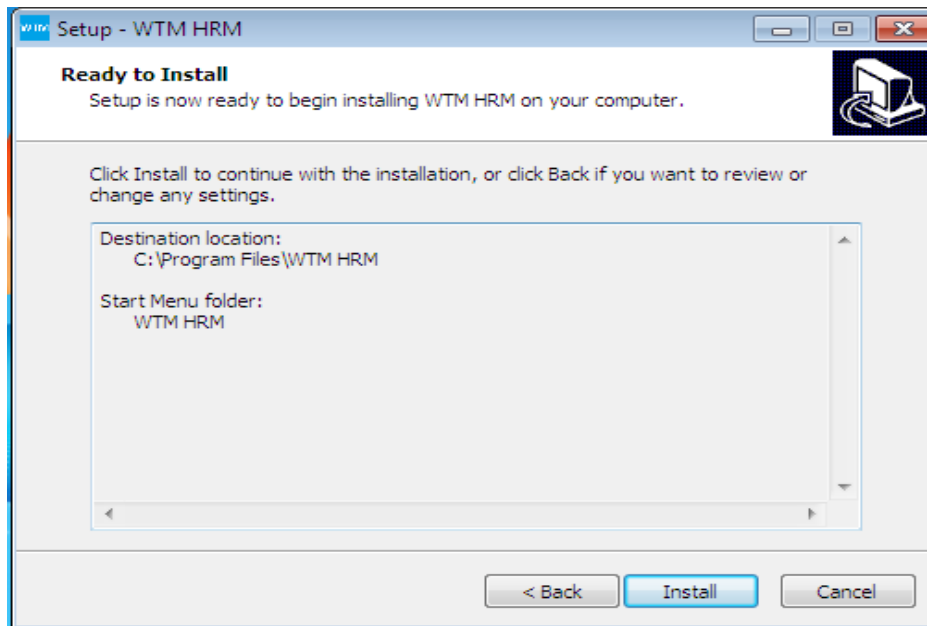
5. Browse WTM HRM SOFTWARE start menu shortcut path



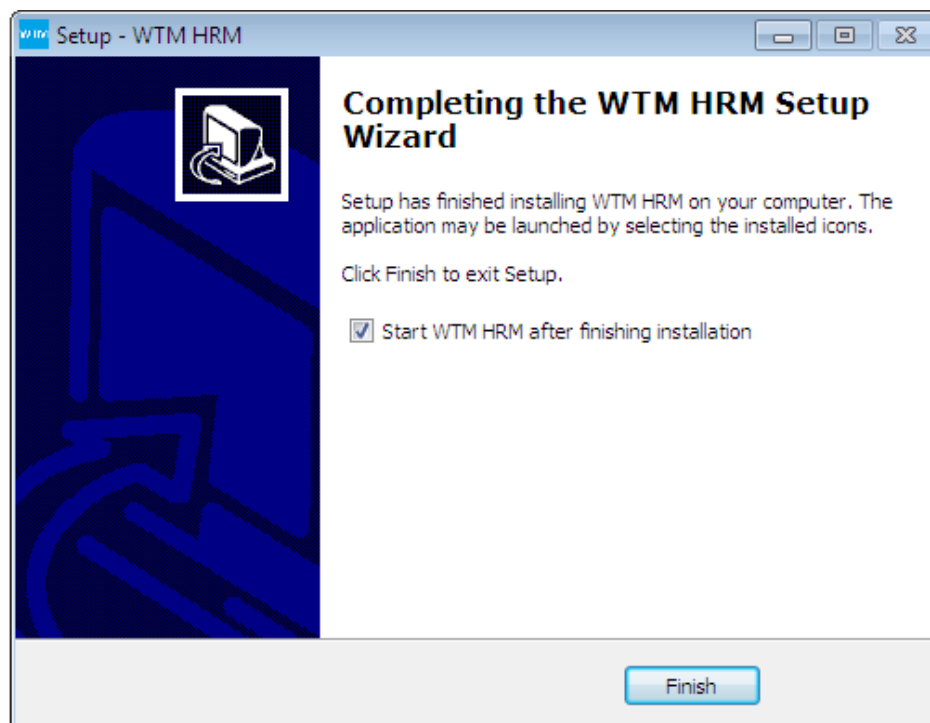
6. Check on Create a desktop icon if you want to create shortcut on desktop.



7. Click on Install



8. Click on Finish



Application Setup

Before you use the WTM HRM application, you must set up the basic structure of your organization, which includes:

Organization Detail: Setting up organization involves entering information such as an organization name, contact details, and a beginning important organization information.

Branch Location : Create your organization head office location.

New Employee : Create organization first employee which is Admin of your organization and remember first employee's Login Id & Password.

Product Key : enter product Key to activate your application. You can find product key from **PRODUCT KEY.txt**

The screenshot shows a web browser window with the URL `localhost:8080/hrm/checkOrganization`. The page features a blue header with the WTM logo and the text "Software • IT". Below the header, the page is titled "Organization" and contains a form for "General Information". The form includes the following fields:

Organization Name	<input type="text"/>	ESIC No	<input type="text"/>
Company Code	<input type="text"/>	Pan No	<input type="text"/>
Phone Number	<input type="text"/>	TAX ID	<input type="text"/>
FAX Number	<input type="text"/>	TAN No.	<input type="text"/>
Email Address	<input type="text"/>	PF Number	<input type="text"/>
Web Site	<input type="text"/>		
Domain Name	<input type="text"/>		

Below the form, there is a section for "Contact Detail" which is currently empty. The footer of the page indicates it is "Powered by www.wtmit.com" and includes the WTM logo.

To run WTM HRM application on multiple system connected through network switch

Allow a program to communicate through window firewall (add an exception in window firewall) on the system where you installed WTM HRM application.

1. To allow window firewall add Tomcat7.exe (Commons Daemon Service Runner) program
C:\Program Files\WTM HRM\tomcat\bin\Tomcat7.exe (default installed path)

OR

The path specified by you and WTM HRM\tomcat\bin\Tomcat7.exe

2. You need a LAN system over which computer systems are connected.
 - Configure Virtual IP network.
 - To configure IP network Find out your router IP address (e.g. 192.168.1.1), Subnet mask, default gateway, preferred DNS server and alternate DNS server and configure it from Internet settings.

Uninstall Instructions

1. Go to control panel and uninstall WTM HRM Application
2. Go to window start menu, click on All Programs, then click on uninstall WTM HRM

Troubleshooting

Reinstall or uninstall the program - If you are encountering problems with your computer or other programs after installing new software on your computer, uninstall the program and see if the issues persist. For uninstalling the program, go to uninstall section

1. I have problem in WTM HRM after installing new software.
2. Reinstall or uninstall the program - If you are encountering problems with your computer or other programs after installing new software on your computer, uninstall the program and see if the issues persist. For uninstalling the program, go to uninstall section.
3. Problem with java run time environment (JRE), this tool requires Java Runtime Environment v1.7 or newer to run. Please download and install JRE and run this setup again. Do you want to download it now?
4. Check for software program updates or new versions - If you are using an old version of the WTM HRM Application, uninstall the program and reinstall new version of the WTM HRM Application.
5. You already installed MYSQL on your machine, change the existing MYSQL port number from 3306 and restart WTM HRM.
6. You already installed TOMCAT on your machine, change existing TOMCAT port number from 8080 and restart WTM HRM.
7. Problems with desktop shortcut of WTM HRM

- 8. Right click on shortcut and run as administrator**
- 9. Go to window start menu, click on All Programs, then click on START WTM HRM for starting the Application and for stop application click on WTM HRM stop.**