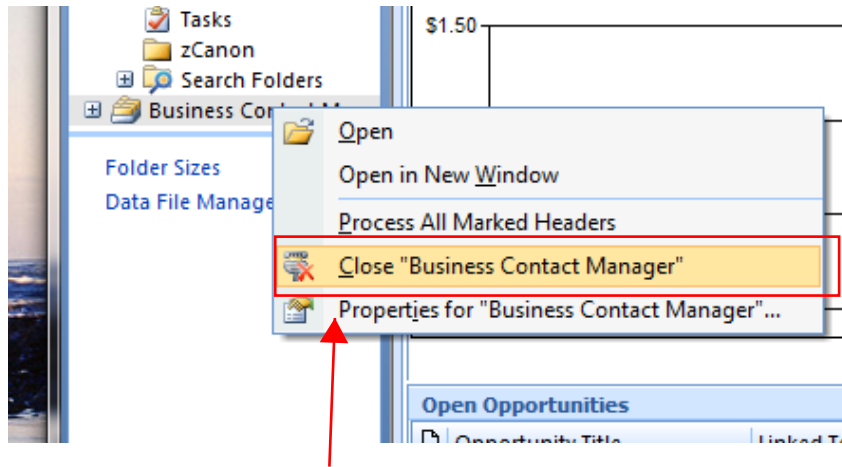
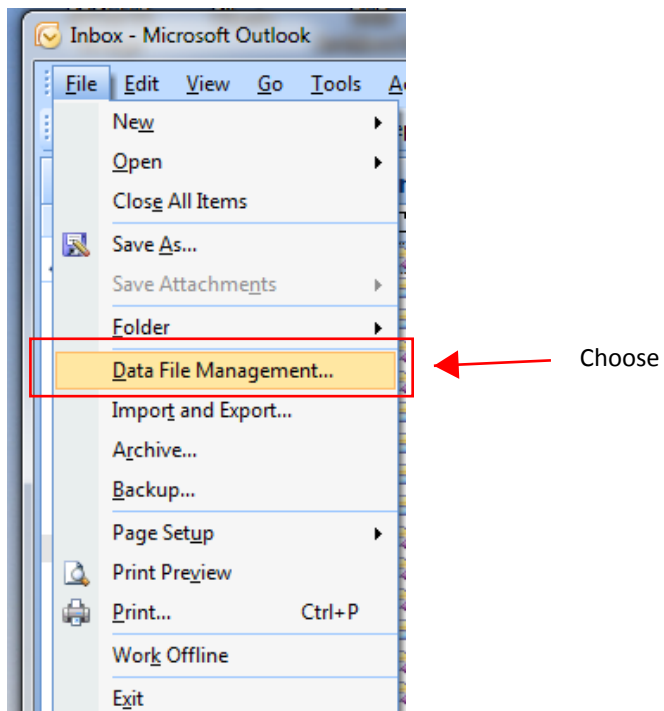


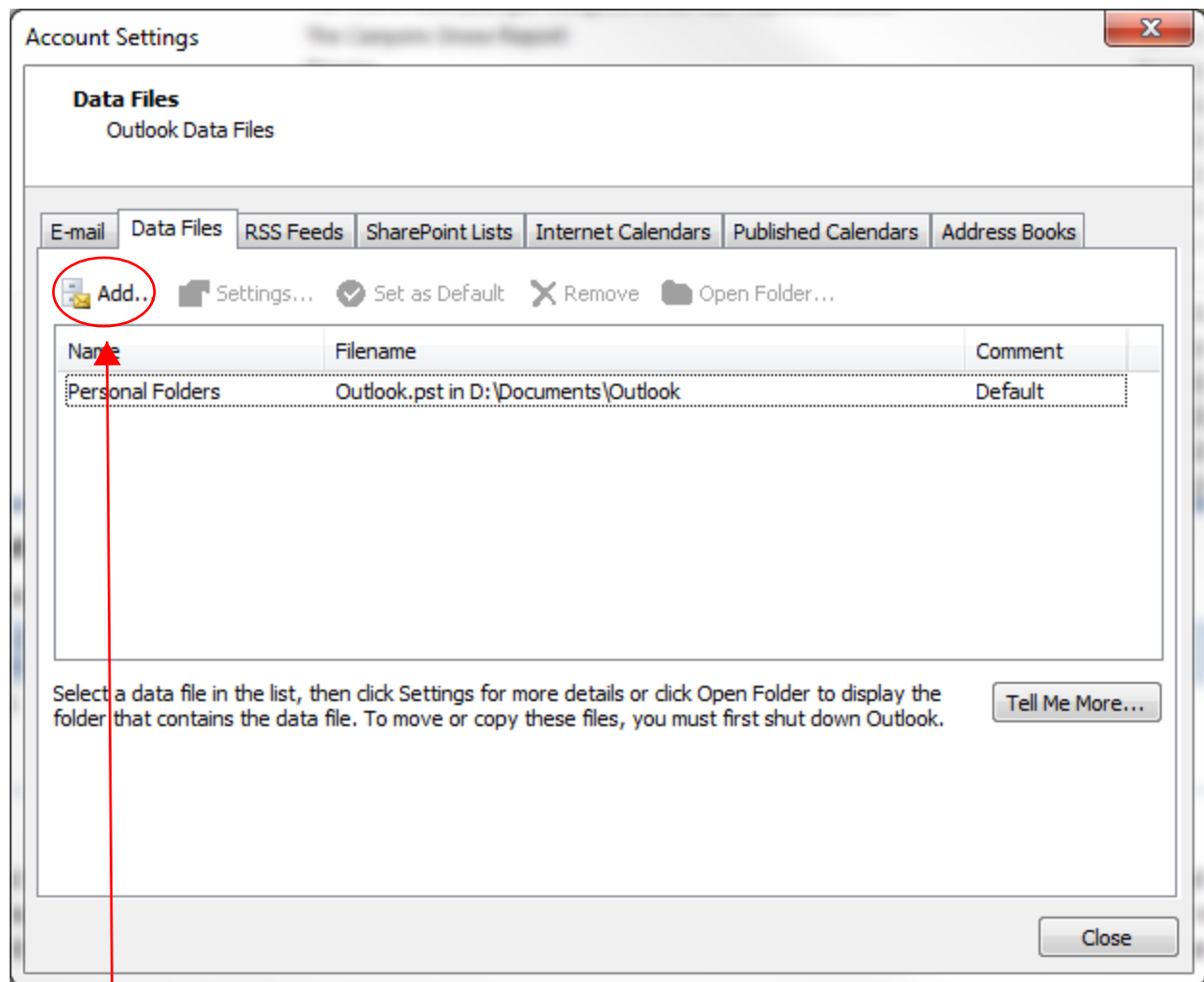
## HOW TO REMOVE AND RESTORE BUSINESS CONTACT MANAGER



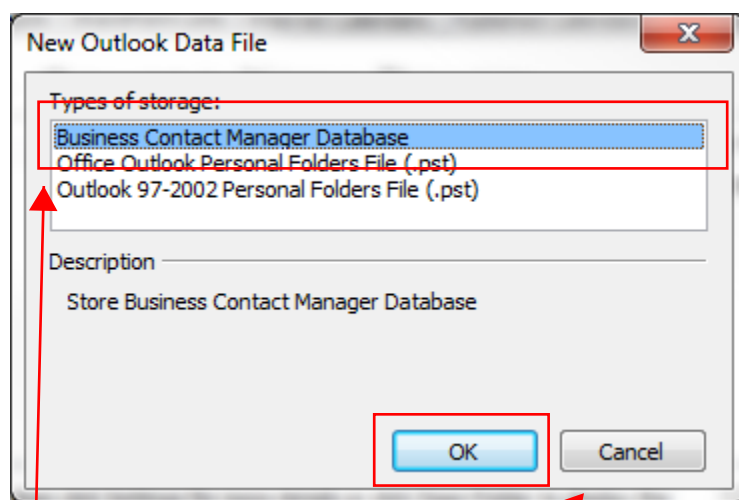
Right Click on Business Contact Manager and choose "Close"

After you've installed RECM, you can restore Business Contact Manager





Choose Add



Choose on Business Contact Manager Database and then click OK

Microsoft Office Outlook 2007 with Business Contact Manager

**Create or select a Business Contact Manager database**  
Microsoft Office Outlook 2007 with Business Contact Manager stores information about your business contacts in a database. You can create a new database or select an existing database.

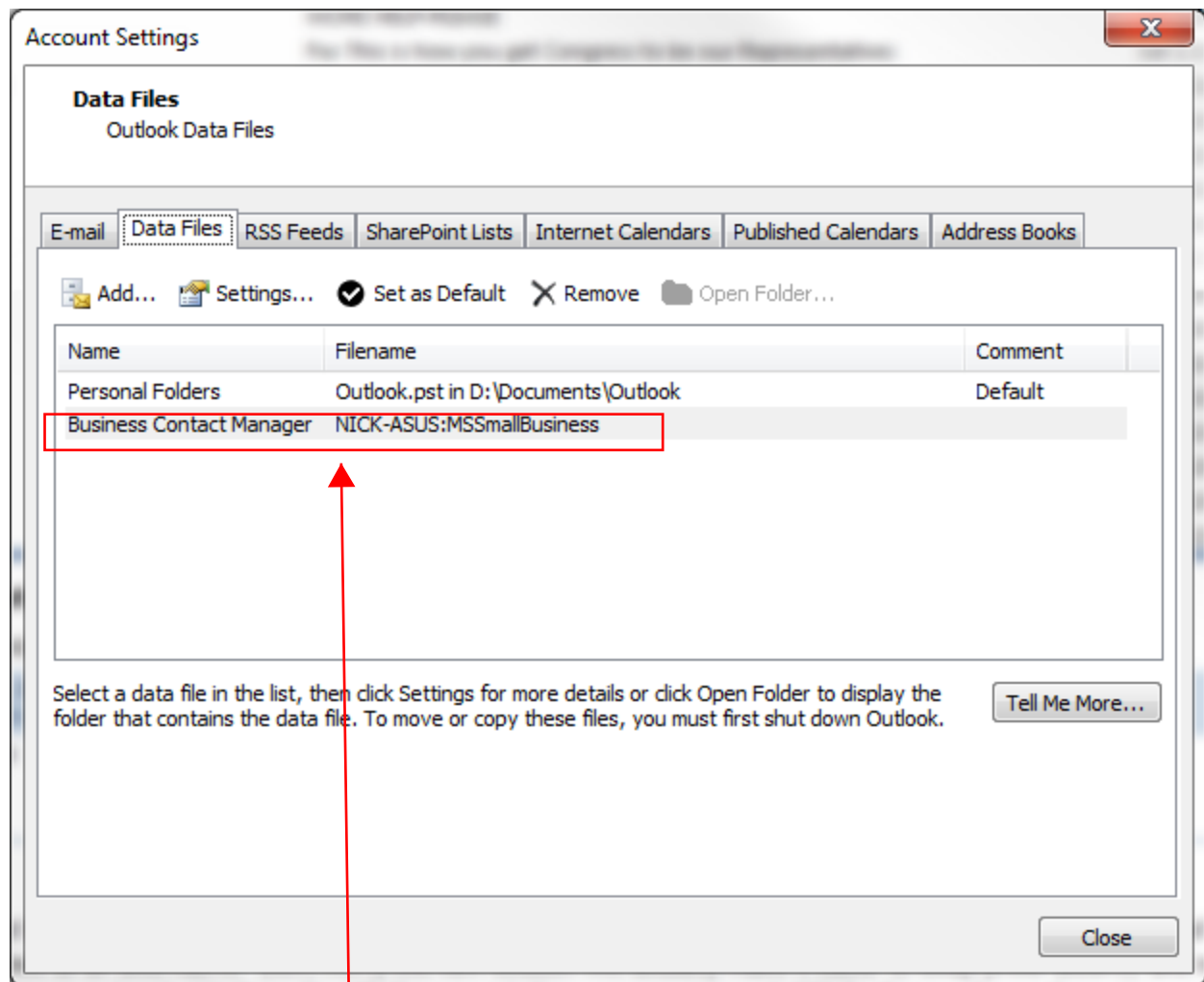
Click one of the following options:

☐ **Create a new database**  
Type a name for your new Business Contact Manager database.  
Database name:

☒ **Select an existing database**  
Type the name of the computer where the existing Business Contact Manager database is stored, and then click Connect. If the database is stored on another person's computer, the owner of the database must share the database with you before you can connect to it.  
Computer name:    
Database name:

Choose "Select an existing database"

Make sure your BCM database name shows up (normally will be the default) and click next.



Outlook will then connect the BCM database and you can use BCM as normal.