

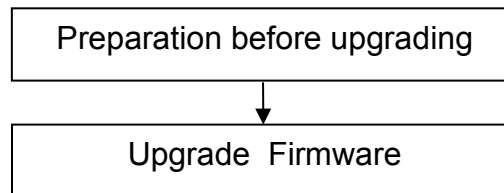
Upgrade Guide for NVR FN3004H

Attention: After upgrading, please uninstall the previous plugin, clear the cache of your browser, then it updates plugin when log-in next time.

This firmware is for NVR FN3004H, please check your NVR model on the sticker. Updating with the wrong firmware could severely damage and/or break your NVR.

Note:

Firmware version 1.32.01.21 or 1.32.01.27 **can** upgrade to this version.



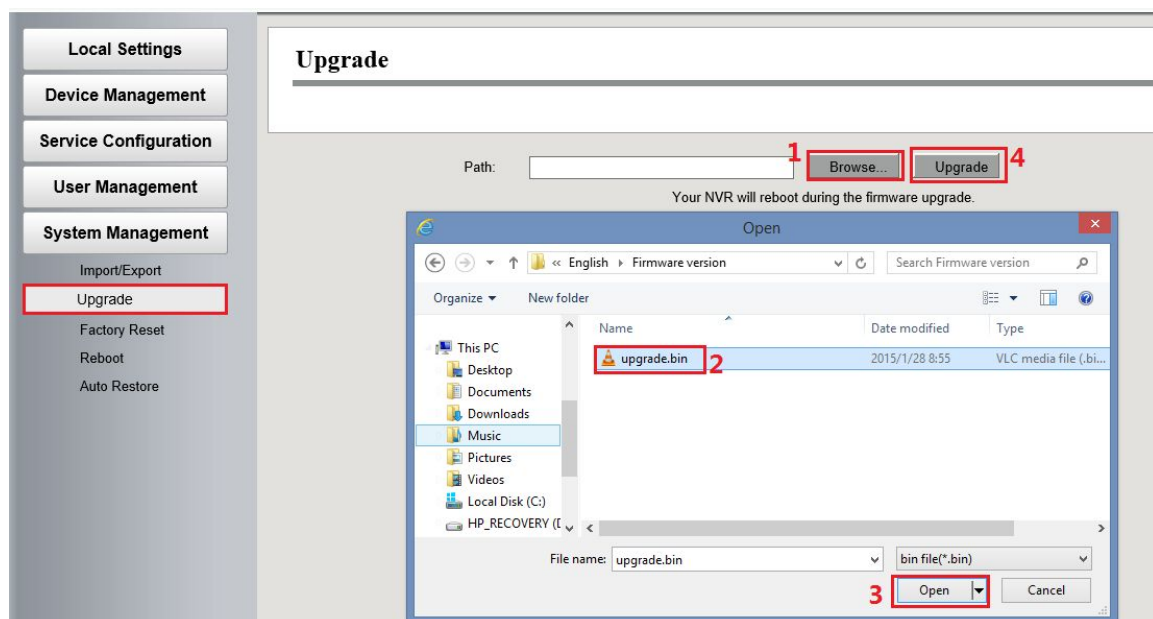
Preparation before upgrading:

1. Please restart your NVR before the upgrading;
2. DO NOT upgrade firmware over internet, just finish it in LAN;
3. Keep power on during the upgrading;
4. Logging your NVR as administrator first, upgrade firmware on web page.

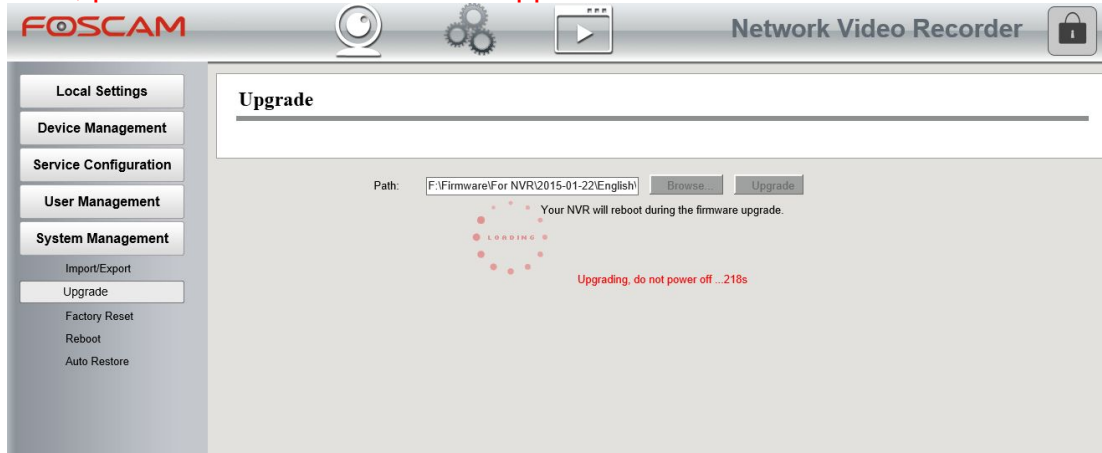
Method 1: Update firmware on **Web Page**.

Step1: Log-in your NVR FN3004H, go to **Settings** → **System Management** → **Upgrade**.

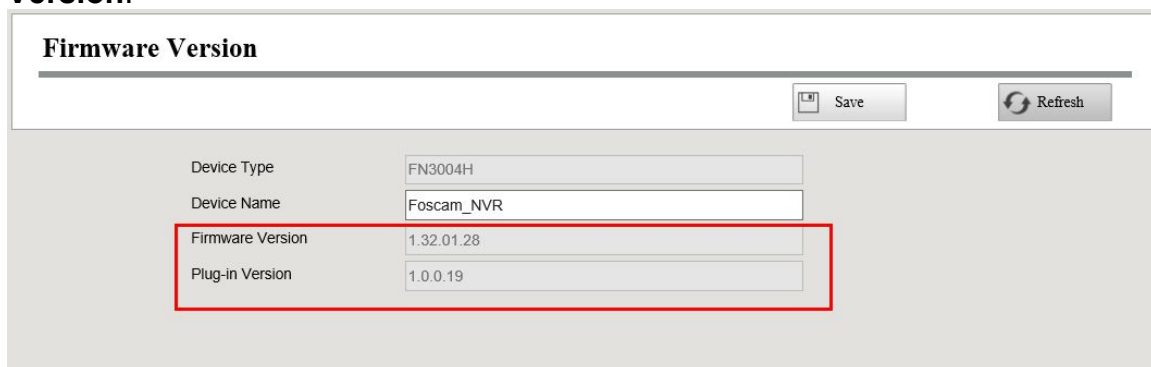
Click **Browse** → choose **upgrade.bin**, click **Open** → click **Upgrade**.



Step 2: “Upgrading, do not power off ... Xs” pop up, NVR IP will disappear from the IP Camera Tool. Then NVR will reboot itself, DO NOT power off the NVR, please wait till the NVR IP reappear in the IP Camera Tool.



Step 3: Log-in your NVR again to check the **Firmware Version**, and **Plug-In Version**.



Congratulations, your NVR successfully upgraded to the latest firmware!

Note:

1. You'd better re-install the plug-in, in case it did not upgraded.
2. The correct firmware version after upgrading:



Attention: After upgrading, please uninstall the previous plugin, clear the cache of your browser, then it updates plugin when log-in next time.

Method 2: Upgrade firmware on **Monitor with U disk.**

Step1: Copy the **upgrade.bin** file to U disk main directory, insert the U disk to NVR.

Step2: Log-in your NVR on Monitor, right click go to **Menu→ System →Upgrade**. The device will recognize the **upgrade.bin** file auto.

Note: During upgrading, NVR will reboot itself, DO NOT power off the NVR .

Step3: After upgrading, go to **Menu→ About →Firmware Version** to check your current **Firmware version**.

End

--- by Foscam Technical Support Team