



Firmware Version: 2.03.002
Boot Code Version: 1.00.004
Published: Oct 02, 2012

These release notes include important information about D-Link switch firmware revisions. Please verify that these release notes are correct for your switch:

- If you are installing a new switch, please check the hardware version on the device label; make sure that your switch meets the system requirement of this firmware version. Please refer to [Revision History and System Requirement](#) for detailed firmware and hardware matrix.
- If the switch is powered on, you can check the hardware version by typing "show switch" command via Telnet or by checking the device information page on the web graphic user interface.
- If you plan to upgrade to the new firmware release, please refer to the [Upgrade Instructions](#) for the correct firmware upgrade procedure.

For more detailed information regarding our switch products, please refer to [Related Documentation](#).

You can also download the switch firmware, D-View modules and technical documentation from <http://tsd.dlink.com.tw>.

Content:

Upgrade Instructions:	2
Upgrade using CLI (via Telnet).....	2
Upgrade using Web-UI.....	3
Upgrade using SmartConsole Utility.....	5
Execute SmartConsole Utility.....	5
New Features:.....	8
Changes of MIB & D-View Module:	9
Changes of Command Line Interface:	10
Problem Fixed:	10
Known Issues:	11
Related Documentation:	11

Revision History and System Requirement:

Firmware Version	Date	Model	Hardware Version
Runtime: v2.03.001 Boot: 1.00.004	2012/10/2	DGS-1210-10P	A1/A2
Runtime: v2.03.001 Boot: 1.00.003		DGS-1210-16 DGS-1210-24 DGS-1210-48	A1
Runtime: v2.02.002 Boot: 1.00.004		DGS-1210-10P	A1/A2
Runtime: v2.02.002 Boot: 1.00.003	2012/02/13	DGS-1210-16 DGS-1210-24 DGS-1210-48	A1
Runtime: v2.01.002 Boot: 1.00.004		DGS-1210-10P	A1
Runtime: v2.01.002 Boot: 1.00.003		DGS-1210-16 DGS-1210-24 DGS-1210-48	A1
Runtime: v2.00.011 Boot: 1.00.004	2010/09/17	DGS-1210-10P	A1
Runtime: v2.00.011 Boot: 1.00.003		DGS-1210-16 DGS-1210-24 DGS-1210-48	A1
Runtime: v1.00.015 Boot: 1.00.002		DGS-1210-10P DGS-1210-16 DGS-1210-24	A1 A1 A1
Runtime: v1.00.014 Boot: 1.00.002	2010/01/05	DGS-1210-10P	A1
Runtime: v1.00.011 Boot: 1.00.003	2009/12/22	DGS-1210-48	A1

Upgrade Instructions:

D-Link Smart Switches support firmware upgrade via HTTP, TFTP server and SmartConsole Utility. You can download the firmware from D-Link web site <http://tsd.dlink.com.tw>, and copy the downloaded firmware to the TFTP server folder. Please make sure that the TFTP server is accessible from the switch via networks.

*** It is not necessary to upgrade boot code on the switch.**

Upgrade using CLI (via Telnet)

1. Make sure the network connection between the switch and PC is active.
2. Use software that supports telnet, for example, HyperTerminal or Telnet command in Microsoft Windows, to connect to the switch. If you are using Telnet command, type the command followed by the switch IP address, eg. *telnet 10.90.90.90*.
3. The logon prompt will appear.

The switch will prompt the user to enter his/her username and password. It should be noted that upon the initial connection, both the default user name and password are **admin**.

To upgrade the switch firmware, execute the following command:

Command	Function
download{firmware_fromTFTP tftp://ip-address/filename cfg_fromTFTP tftp://ip-address/filename}	Download firmware file from the TFTP server to the switch.

When completing firmware upgrade, the following messages will pop up.

```
Device will reboot after firmware upgraded successfully
Image upgraded successfully
```

4. Execute the following command to check the firmware version and switch's information.

Command	Function
show switch	Display the information of current firmware and boot version.

Example:

1. **DGS-1210-10P:**

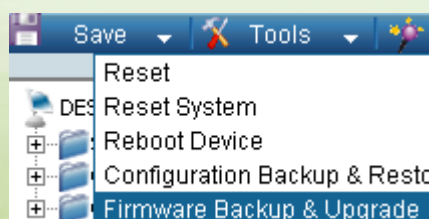
```
Command: download firmware_fromTFTP tftp://10.90.90.91 DGS-1210-10P A1_
2.00.011.hex
Device will reboot after firmware upgraded successfully
Image upgraded successfully
```

2. **DGS-1210-10P:**

```
Command: show switch
DGS-1210-10P> show switch
System name           :
System Contact        :
System Location       :
System up time        : 0 days, 1 hrs, 8 min, 36 secs
System Time           : 01/01/2009 01:58:42
System hardware version : A1
System firmware version : 2.00.011
System boot version    : 1.00.004
System Protocol version : 2.00.004
System serial number   : LABDGS1224008
MAC Address           : 00-12-24-00-08-00
```

Upgrade using Web-UI

1. Connect a workstation installed with java SE runtime environment to any port of the switch.
2. Open the web browser from the workstation and enter the IP address of the switch. The switch's default IP address is 10.90.90.90.
3. Enter administrator's password when prompted. The password is **admin** by default.
4. To update switch's firmware or configuration file, select **Tools > Firmware Backup & Upgrade** from the banner.



5. Two options : through **HTTP** or **TFTP**

Firmware Backup and Upgrade Safeguard

☒ **HTTP**

Backup firmware to file :

Upgrade firmware from file :

☐ **TFTP**

TFTP Server IP Address

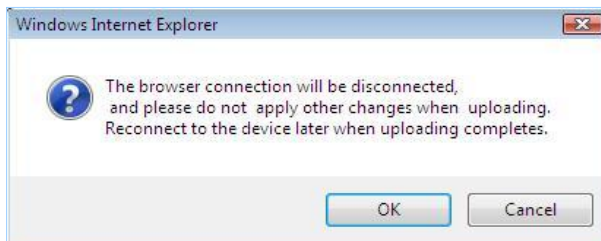
TFTP File Name

Backup firmware to file :

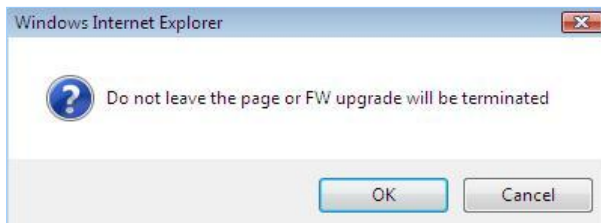
Upgrade firmware from file :

6. Select **HTTP** to upgrade with the firmware in your local PC drives.

- Click **Browse** to browse your inventories for a firmware file
- Click **Upgrade** after selecting one
- Click **OK** to continue upgrade



- Click **OK** to continue.



- Wait until the message "Firmware Upgrade Successful" pops up and login again after device boots up.



7. Select **TFTP** to upgrade firmware from a remote TFTP server.
 - a. Enter the name of the firmware file located on the TFTP server
 - b. Click **Upgrade** after selecting the firmware file you want to restore
 - c. Click **OK** to continue with firmware upgrade

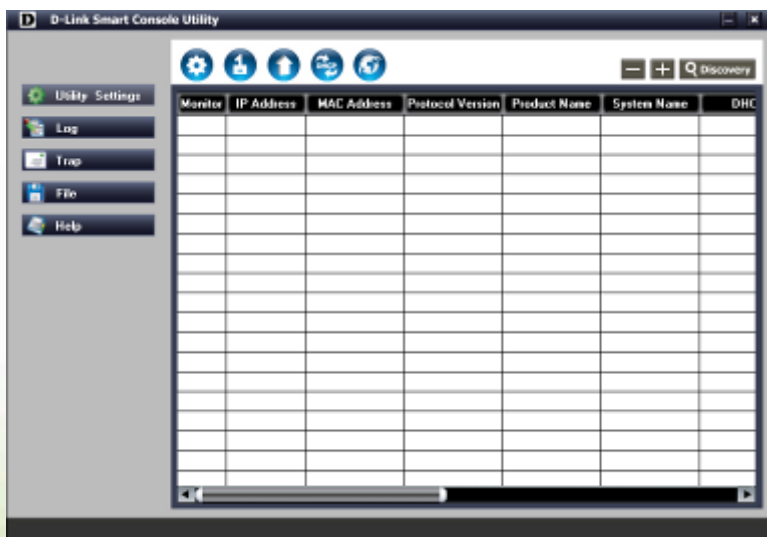


- d. Wait until the firmware upgrade finishes and login again after device boots up.

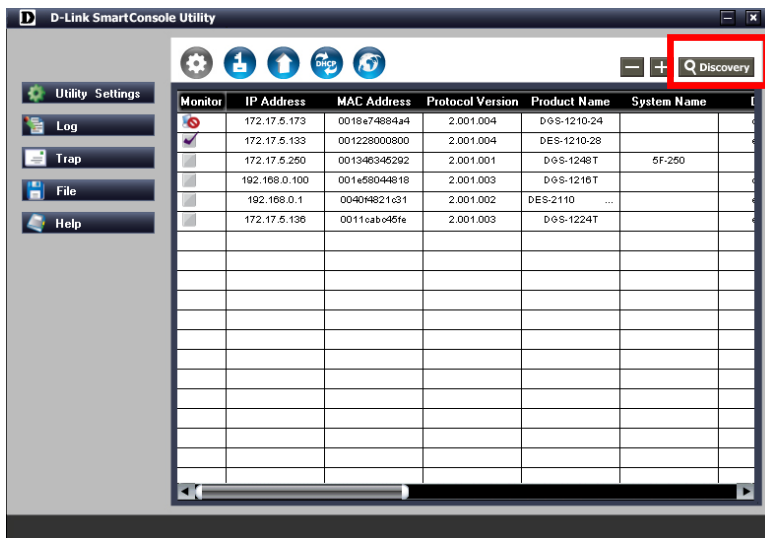


Upgrade using SmartConsole Utility

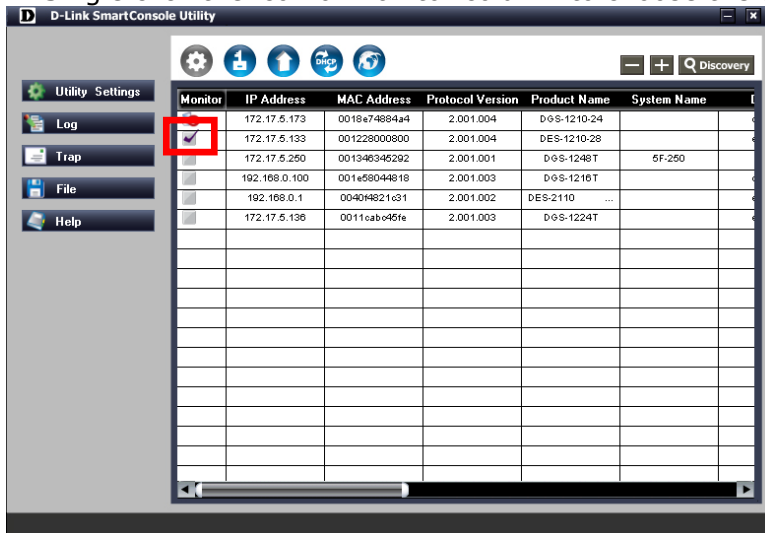
1. Connect a workstation installed with java SE runtime environment to any switch port of the device
2. Execute SmartConsole Utility



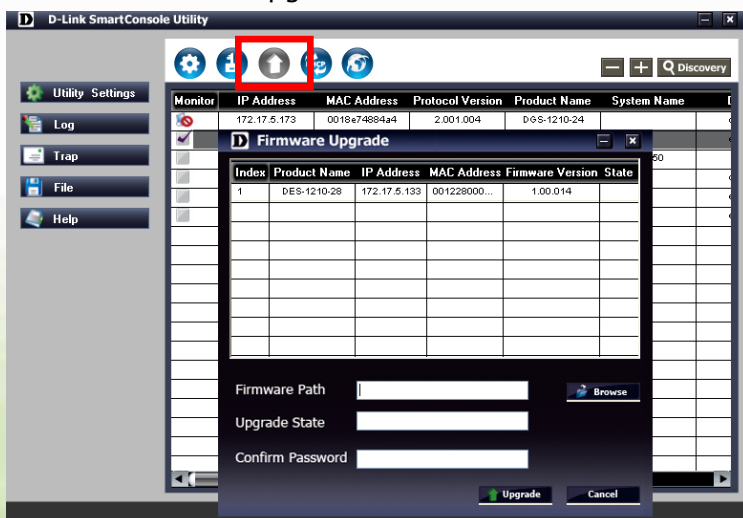
3. Click Discovery button to search target switch



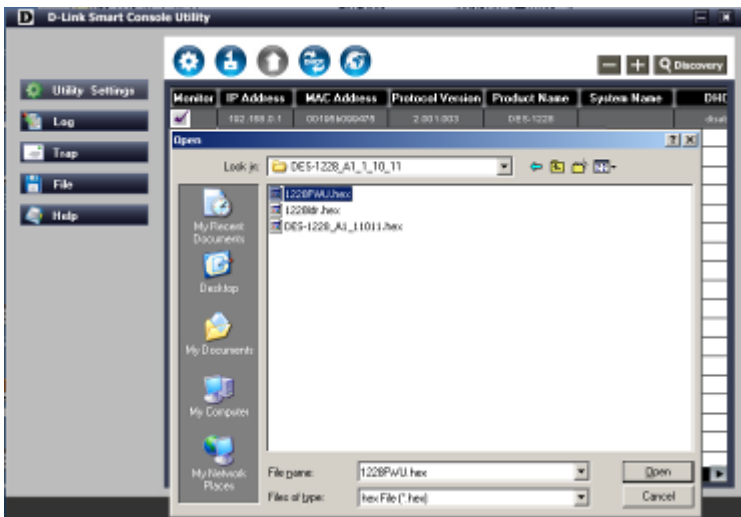
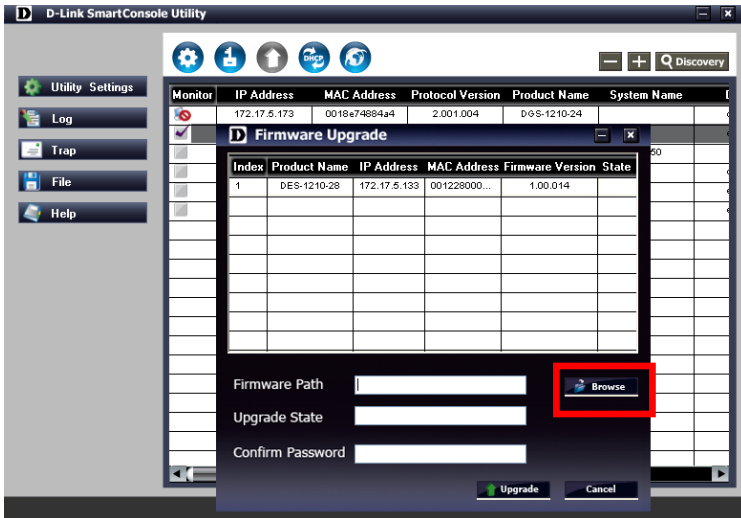
4. Single click the icon of Monitor column to choose the target switch



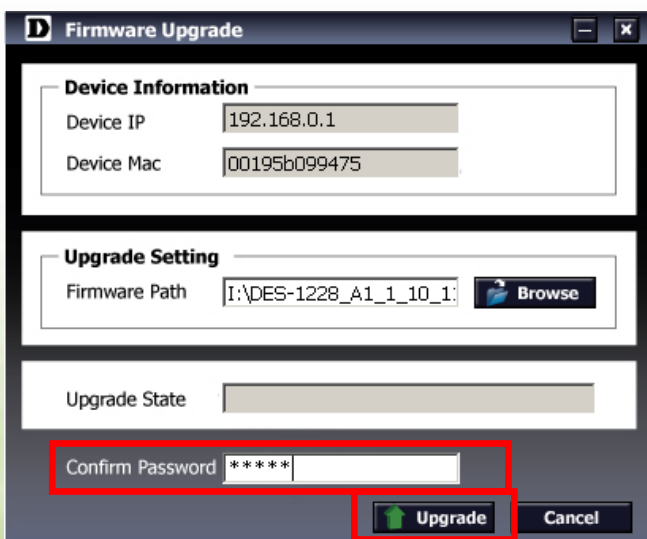
5. Click Firmware Upgrade button



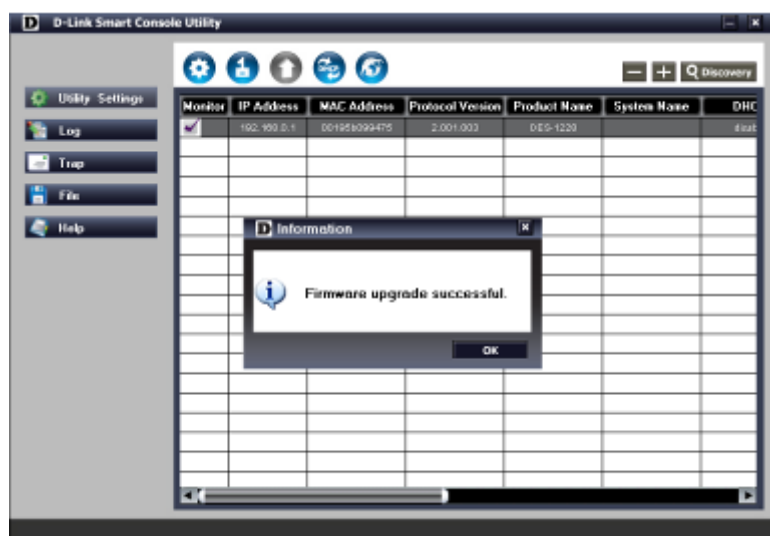
6. Click Browse button and select the firmware file (Model name_HW ver._FW ver. .hex) on your local hard drive.



7. Enter password and click "Upgrade" button to start firmware upgrade. The default password is "admin".



8. Once the message popped up, click "OK" button to complete the firmware upgrade



New Features:

Firmware Version	New Features
V2.03.001	None
V2.02.002	1. Add a pre-defined OUI for D-Link IP Surveillance and NVR devices in function Auto Surveillance VLAN.
V2.01.002	1. Add Portuguese Web UI 2. Add more configurations in Auto Surveillance VLAN
V2.00.011	1. Web GUI supports multiple languages 2. Auto Surveillance VLAN 3. ARP Spoofing Prevention 4. DHCP Server Screening 5. DHCP Auto Configuration 6. Multicast Filtering: Filter for unregistered groups and forward unregistered groups. 7. SNMPV3 8. SSL 9. Debug info command
V1.00.015	First release for DGS-1210-16/24
V1.00.014	First release for DGS-1210-10P

V1.00.011

First release for DGS-1210-48

Changes of MIB & D-View Module:

The new features of MIB file are also included in the corresponding D-View module. Please download the D-View module from <http://tsd.dlink.com.tw>. For detailed changes of MIB content, please refer to the modification history in each MIB file.

Firmware Version	MIB File	New Features
V2.03.001	DGS-1210-10P_AX_2_01_001.mib DGS-1210-16_A1_2_01_001.mib DGS-1210-24_AX_2_01_001.mib DGS-1210-48_AX_2_01_001.mib	None
V2.02.002		
V2.01.002		Add configurations in Auto Surveillance VLAN
V2.00.011	DGS-1210-10P_Ax_2_00_004.mib DGS-1210-16_A1_2_00_004.mib DGS-1210-24_AX_2_00_004.mib DGS-1210-48_A1_2_00_004.mib	<ol style="list-style-type: none"> 1. Auto Surveillance VLAN 2. ARP Spoofing Prevention 3. DHCP Server Screening 4. DHCP Auto Configuration 5. Multicast Filtering 6. SNMPV3 7. SSL
V1.00.015	DGS-1210-16_A1_1_00_004.mib DGS-1210-24_A1_1_00_004.mib	First release for DGS-1210-16/24
V1.00.014	DGS-1210-10P_Ax_1_00_007.mib	First release for DGS-1210-10P
V1.00.011	DGS-1210-48_A1_1_00_003.mib	First release for DGS-1210-48

Firmware Version	D-View Module File	New Features
V2.03.001	DV_DGS-1210-10P_V2.0.1.0_FW_v2.0.1.002.exe	None
V2.02.002	DV_DGS-1210-16_V2.0.1.0_FW_v2.01.002.exe DV_DGS-1210-24_V2.0.1.0_FW_v2.01.002.exe	
V2.01.002	DV_DGS-1210-48_V2.0.1.0_FW_v2.01.002.exe	Add configurations in Auto Surveillance VLAN

V2.00.011	DV_DGS-1210-10P_V2.0.0.11_FW_v2.00.011.exe DV_DGS-1210-16_V2.0.0.11_FW_v2.00.011.exe DV_DGS-1210-24_V2.0.0.11_FW_v2.00.011.exe DV_DGS-1210-48_V2.0.0.11_FW_v2.00.003.exe	<ol style="list-style-type: none"> 1. Auto Surveillance VLAN 2. ARP Spoofing Prevention 3. DHCP Server Screening 4. DHCP Auto Configuration 5. Multicast Filtering 6. SNMPV3 7. SSL
V1.00.015	DV_DGS-1210-10P_V1.0.0.11_FW_v1.00.014.exe DV_DGS-1210-16_V1.0.0.10_FW_v1.00.015.exe DV_DGS-1210-24_V1.0.0.10_FW_v1.00.015.exe	First release for DGS-1210-16/24
V1.00.014	DV_DGS-1210-10P_V1.0.0.11_FW_v1.00.014.exe	First release for DGS-1210-10P
V1.00.011	DV_DGS-1210-48_V1.0.0.10_FW_v1.00.011.exe	First release for DGS-1210-48

Changes of Command Line Interface:

The section below only shows command line changes that may bring backward compatibility issues with configuration settings for previous version of firmware. Any new feature commands that do not have backward compatibility issues are not included in the below section.

Firmware Version	Changes
V2.03.001	None
V2.02.002	None
V2.01.002	None
V2.00.011	None
V1.00.015	First release for DGS-1210-16/24
V1.00.014	First release for DGS-1210-10P
V1.00.011	First release for DGS-1210-48

Problem Fixed:

Firmware Version	Problems Fixed
V2.03.001	Some vulnerability issues were reported by DEUR, including directory traversal, encryption, and information disclosure.

V2.02.002	<ol style="list-style-type: none"> 1. Some internal PoE parameters on DGS-1210-10P are changed in order to give some tolerance to potential cable loss. 2. Fixed password setting problem on some character combinations. 3. Fixed the problem that some IP packets cannot pass through a gateway.
V2.01.002	None
V2.00.011	Fix web issue about the left menu does not show correctly via Firefox browser V3.6 for 1920*1080 Screen resolution. (HQ20100311000005)
V1.00.015	<ol style="list-style-type: none"> 4. Change User Guide URL link for DGS-1210-10P 5. First release for DGS-1210-16/24
V1.00.014	First release for DGS-1210-10P
V1.00.011	First release for DGS-1210-48

* D-Link tracking number is enclosed in ()

Known Issues:

Firmware Version	Issues	Workaround
V2.03.001	1. QoS: When congestion occurs and queue handling mode is set to Strict, bandwidths were allocated unequally to the ingress flows that have same priority.	None
V2.02.002	2. D-View Module: Information is not synchronous between Web UI and D-view, but it does not affect functions.	None
V2.01.019	3. D-View Module: Setting failure when setting the 4 LLDP parameters at the same time.	Setting LLDP through Web GUI
V2.01.002		
V2.00.011		
V1.00.015		
V1.00.014	When two ports transmit packets to the same destination port with the same queue, the received rate is not stable.	None
V1.00.011		

Related Documentation:

- DGS-1210 Series Web UI Reference Guide
- DGS-1210 Series Getting Started Guide